

PROTISTI

unicellulari
eucarioti

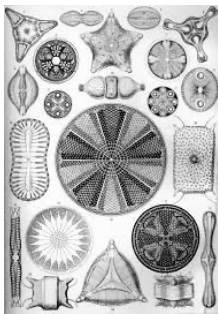
PROTOFITI

Autotrofi

Hanno clorofilla e fanno
la fotosintesi

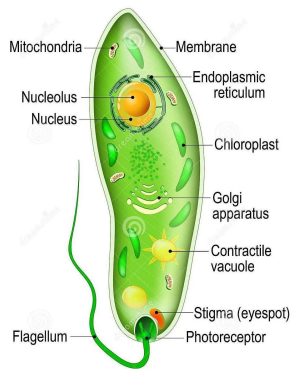
Diatomee

Varie forme
Guscio siliceo
a formare
SABBIA DI
FARINA
FOSSILE



Euglena

Eterotrofa
in condizione
di buio.
Flagello
per muoversi



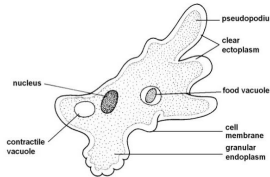
PROTOZOI

Eterotrofi

Placton

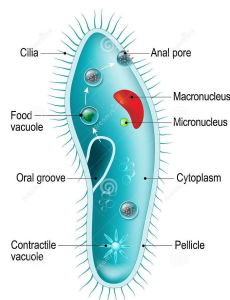
- Rizopodi**

Movimento con
pseudopodi.
Fagocitosi.
Acque stagnanti
ES: **AMEBA**
RADIOLARI
FORAMINIFERI



- Ciliati**

Movimento con
ciglia
Apparato buccale
e ano
Acque stagnanti
ES: **PARAMECIO**

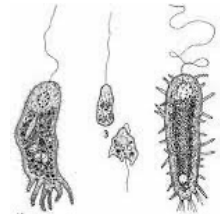


Parassiti

Vivono in
animali vettori

- Zooflagellati**

Movimento con
flagello con bocca
Cellula
Allungata
Malattia del
sonno
(MOSCA TSE TSE)
ES: **TRIPANOSOMA**



- Sporozoi**

Senza Movimento
Malaria
(ZANZARA ANOFELE)
ES: **PLASMODIO**

